



**BALTIMORE
AIRCOIL COMPANY**



DFCV-AD-EC Adiabatic Cooler

OPERATING AND MAINTENANCE INSTRUCTIONS



Recommended Maintenance and Monitoring Programme

Baltimore Aircoil Company equipment needs to be properly installed, operated and maintained. Documentation of the equipment used, including a drawing, technical data sheet and this manual should be kept on record. To achieve long, trouble-free and safe operation, it is necessary to establish an operating plan including a programme of regular inspection, monitoring and maintenance. All inspections, maintenance and monitoring actions should be recorded in a cooling system logbook. The operating and maintenance instructions published here can be used as a guide to achieve these goals.

In addition to establishing the operating plan and the cooling system logbook it is recommended to conduct a cooling system risk analysis, preferably by an independent third party.

For more specific recommendations on keeping your cooling system efficient and safe, contact your local BAC Balticare service provider or representative. Name, e-mail and phone number can be found on the website www.BACService.eu. or www.BaltimoreAircoil.co.za.

Checks and Adjustments	Start-Up	Every Month	Every 3 Months	Every 6 Months	Every Start of Adiabatic Season, Spring
Adiabatic Pre-Cooler water flow	X		X		X
Adiabatic controller set-point	X		X		X
Tighten Electrical Connections	X			X	X
Rotation of fan(s)	X				
Motor voltage and current	X			X	X
Unusual noise and/or vibration	X		X		X

Inspections and Monitoring	Start-Up	Every Month	Every 3 Months	Every 6 Months	Every Start of Adiabatic Season, Spring
General condition of the equipment	X		X		X
Adiabatic pre-cooling pads	X		X		X
Heat transfer coil	X			X	
Water distribution pipe	X			X	X
City water strainer	X	X			X
Check each fan for damage to blades & housing				X	
Check the insulation of fan wires for damage				X	
Tightness of fan screwed cable glands				X	
Condensate discharge holes for clogging				X	

Cleaning Procedures	Start-Up	Every Month	Every 3 Months	Every 6 Months	Every Start of Adiabatic Season, Spring
Adiabatic Pre-Cooling media	X		X		X
Adiabatic gutter system				X	X



Auxiliary equipment integrated in the cooling system may require additions to the table above. Contact suppliers for recommended actions and their required frequency.

Table of Contents

OPERATING AND MAINTENANCE INSTRUCTIONS



1	Construction Details	4
2	General Information	6
	Operating Conditions	6
	Connecting Pipework	6
	Safety Precautions	6
	Disposal Requirements	7
	Non-walking Surfaces	7
	Modifications by others	7
	Warranty	8
3	Water Care	9
	About Water Care	9
	Biological Control	12
	Chemical Treatment	12
4	Cold Weather Operations	13
	About Cold Weather Operation	13
	Protection Against Coil Freezing	13
5	Operating Instructions	14
	TrilliumSeries Coolers with EC Fans & Factory Installed Control Panel	14
	Electrical Panels	15
	Operating Instructions Digital Controller	16
	Default Menu	17
	Alarms	17
	Operator Menu	17
	Monitoring of Process Information	18
6	Maintenance Procedure	19
	Checks and Adjustments	19
	Inspections and Corrective Actions	20
	Fan Replacement	22
	Cleaning Procedures	23
	Adiabatic Pre-Cooling Media	32
7	Comprehensive Maintenance	36
	About Comprehensive Maintenance	36
	Prolonged Outdoor Stay	36
8	Further Assistance & Information	37
	Balticare	37
	More Information	37

DFCV-AD-EC CONSTRUCTION DETAILS



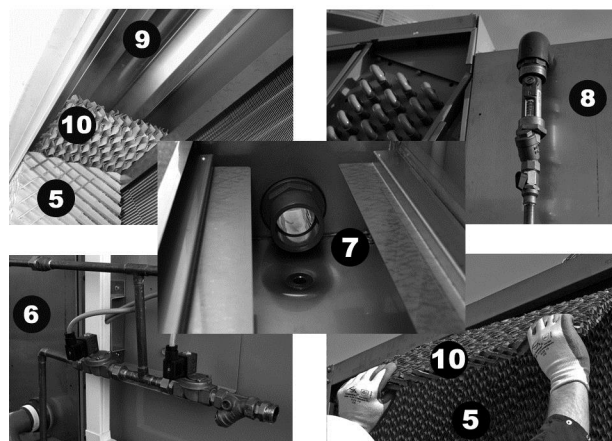
TrilliumSeries
Cooler





Details

1. Heat exchanger
2. Coil Headers
3. Casing
4. Fans
5. Pre-cooler Media
6. Pre-Cooler Solenoid Valve and Water Filter
7. Pre-Cooler Drain Valve
8. Pre-Cooler Drain
9. Pre-Cooler flow Valve/Meter
10. Pre-Cooler Water Distribution Header
11. Pre-Cooler Water Distribution Gutter
12. Pre-Cooler Water Distribution Pads
13. Ambient Temperature Sensor
14. Power Panel
15. Control Panel
16. Make-up
17. Recirculation pump (optional)
18. Flow switch
19. Level switch
20. Make-up flow balancing valve
21. Coil connections



Details

Operating Conditions

BAC cooling equipment is designed for the operating conditions specified below, which must not be exceeded during operation.

- **Wind Load:** For safe operation of unshielded equipment exposed to wind speeds above 120 km/h installed at a height above 30 m from the ground, contact your local BAC-Balticare representative.
- **Seismic Risk:** For safe operation of equipment installed in moderate and high hazard area's contact your local BAC-Balticare representative.

Ambient temperature at continuous full speed; full load operation ranges from -10°C to + 45°C. For cold climates, if optional thermostatically controlled heaters are employed, the temperature range can be extended from -40°C to + 45°C.

HEAT EXCHANGER COIL

- Design Pressure: 10 bar
- Maximum Fluid Inlet Temperature: 60 °C
- Fluids circulated through the inside of the coils must be compatible with the coil construction material.

ADIABATIC PRE-COOLER OF TRILLIUMSERIES COOLER

- Design Pressure: 3-7 bar
- Maximum Fluid Inlet Temperature: +/- 20°C
- The water distributed on the adiabatic pre-coolers should be of potable supply.
- Water temperature not to exceed 20°C to avoid microbiological proliferation.

Connecting Pipework

All piping external to BAC cooling equipment must be supported separately.

In case the equipment is installed on vibration rails or springs, the piping must contain compensators to eliminate vibrations carried through the external pipework.

Safety Precautions

All electrical, mechanical and rotating machinery constitutes a potential hazard, particularly for those not familiar with its design, construction and operation. Accordingly, adequate safeguards (including use of protective enclosures where necessary) should be taken with this equipment both to safeguard the public (including minors) from injury and to prevent damage to the equipment, its associated system and the premises.

If there is doubt about safe and proper rigging, installation, operation or maintenance procedures, contact the equipment manufacturer or his representative for advice.

When working on operating equipment, be aware that some parts may have an elevated temperature. Any operations on elevated level have to be executed with extra care to prevent accidents.

AUTHORIZED PERSONNEL

The operation, maintenance and repair of this equipment should be undertaken only by personnel authorized and qualified to do so. All such personnel should be thoroughly familiar with the equipment, the associated systems and controls and the procedures set forth in this and other relevant manuals. Proper care, personal protective equipment, procedures and tools must be used in handling, lifting, installing, operating, maintaining and repairing this equipment to prevent personal injury and/or property damage. Personnel must use personal protective equipment where necessary (gloves, ear plugs, etc...)

MECHANICAL SAFETY

Mechanical safety of the equipment is in accordance with the requirements of the EU machinery directive. Depending upon site conditions it also may be necessary to install items such as bottom screens, ladders, safety cages, stairways, access platforms, handrails and toe boards for the safety and convenience of the authorized service and maintenance personnel.

At no time this equipment should be operated without all fan screens in place.

Since the equipment operates at variable speeds, steps must be taken to avoid operating at or near the installation's "critical speed";

For more information consult your local BAC Balticare representative.

Each fan associated with this equipment should be installed with a lockable disconnect switch located within sight of the equipment. No service work should be performed on or near the fans unless motors are electrically isolated.

LOCAL REGULATIONS

Installation and operation of cooling equipment may be subject to local regulations, such as establishment of risk analysis. Ensure regulatory requirements are consistently met.

Disposal Requirements

Dismantling of the unit and treatment of refrigerants, oil and other parts must be done with respect to the environment whilst protecting workers from potential risks related to exposure to harmful substances.

National and regional legislation for material disposal and protection of workers should be taken into account with regard to:

- Appropriate handling of construction and maintenance materials when dismantling the unit. In particular when dealing with materials that contain harmful substances, such as asbestos or carcinogenic substances.
- Appropriate disposal of the construction and maintenance materials and components such as steel, plastics, refrigerants and waste water according to local and national requirements for waste management, recycling and disposal.

Non-walking Surfaces

Access to and maintenance of any component needs to be performed in accordance with all local applicable laws and regulations. If the proper and required access means are not present, temporary structures need to be foreseen. Under no circumstance can one use parts of the unit, that are not designed as an access mean, unless measures can be taken to mitigate any risks that might occur from doing so.

Modifications by others

Whenever modifications or changes are made by others to the BAC equipment without written permission of BAC, the party who has done the modification becomes responsible for all consequences of this change and BAC declines all liability for the product.



Warranty

BAC will guarantee all products to be free from manufactured defects in materials and workmanship for a period of 12 months from the date of shipment. In the event of any such defect, BAC will repair or provide a replacement. For more details, please refer to the Limitation of Warranties applicable to and in effect at the time of the sale/purchase of these products. You can find these terms and conditions on the reverse side of your order acknowledgement form and your invoice.

About Water Care

The Adiabatic Pre-Cooler of the unit has been designed as direct-water system, without water re-circulation, without pump. Therefore it is essential that the main cold-water supply connected to the Adiabatic Pre-Cooler has adequate pressure and flow rate for the pre-cooler being installed.

The primary water treatment control method for the Adiabatic Pre-Cooler is to provide sufficient water to the Pre-Cooler medium to keep it flushed. If sufficient water is not provided to completely wet and flush the entire Pre-Cooler medium surface, deposition will occur.

Many water related problems can be avoided if good system design and basic housekeeping practices are followed. However, water treatment chemicals should NOT be used INSTEAD of following these practices:

- provide, good, even water distribution (See Table: Minimum Recommended Adiabatic Pre-Cooler water flow rates)
- clean distribution header on a regular basis
- clean city water strainer on a regular basis
- replace damaged or spent Pre-Cooler media

Refer to "Construction Details" on page 4 of the unit. Mains cold water is supplied to (6), and is fed to the water distribution system (9), via a flow valve/meter (8). The recommended mains water supply pressure is minimum 3 bar, and the flow valve/meter (8) needs to be adjusted at installation to feed a minimum water flow over the Adiabatic Pre-Cooler (See Table: "Minimum Recommended Adiabatic Pre-Cooler water flow rates")

The minimum water flow to be distributed over the Adiabatic Pre-cooler depends on:

- climate conditions, i.e. evaporation rate at design conditions
- general water quality
- water scaling tendency (practical Scaling Index)

The minimum water flow rates given in Table "Minimum Recommended Adiabatic Pre-Cooler Water Flow rates", are valid for the following operating conditions:

- maximum ambient temperature of 35 °C at minimum relative humidity of 30 %.
- minimum supply water quality (See Table below "Minimum Supply Water Quality").
- practical scaling index of 5.5 – 8.0.

To control corrosion and scale, the water chemistry of the circulated water has to be kept within the water quality guidelines of the specific materials of construction used, as listed in the following table(s).

Water Quality Guidelines For Adiabatic Pre-Cooler Frame	BALTIBOND® Hybrid Coating
Temperature	< 20 °C
PH	6.5 – 9
Hardness as (CaCO ₃)	30 – 500 mg/l
Alkaline as (CaCO ₃)	< 500 mg/l
Total Dissolved Solids	< 1500 mg/l
Chlorides	< 200 mg/l
Sulfates	< 300 mg/l
Conductivity	1800 µS/cm
Bacteria Rate (CFU/ml, KBE/ml)	< 1000

Water Quality Guidelines For Adiabatic Pre-Cooler Frame	BALTIPLUS 800™ Coating
Temperature	< 20 °C
PH	6.5 – 9
Hardness as (CaCO ₃)	50 – 500 mg/l
Alkaline as (CaCO ₃)	< 500 mg/l
Total Dissolved Solids	< 1500 mg/l
Chlorides	< 200 mg/l
Sulfates	< 250 mg/l
Conductivity	1800 µS/cm
Bacteria Rate (CFU/ml, KBE/ml)	< 1000

Minimum Supply Water Quality



For Ozone water treatment application, stainless steel 316 execution is required.

Model	Number of Fans	Minimum pre-cooler water flow per unit
DFCV-EC9122-*	4 fans	14 l/min
DFCV-EC9123-*	6 fans	22 l/min
DFCV-EC9124-*	8 fans	28 l/min
DFCV-EC9125-*	10 fans	36 l/min
DFCV-EC9126-*	12 fans	44 l/min
DFCV-EC9127-*	14 fans	50 l/min

Recommended Adiabatic Pre-Cooler Water Flow Rates

If any of the following happens:

- at ambient conditions exceeding the given maximum ambient conditions,
- with supply water quality data exceeding one or more of the concentration limits of above Table "Minimum Supply Water Quality",
- if the supply water has a Practical Scaling Index below 5.5,

Then:

- the water flow needs to be increased to higher levels to avoid rapid fouling and scaling of the Pre-Cooler medium. Contact your local BAC-Balticare representative for support.

Data for Rapid Calculations of Practical Scaling Index for Adiabatic Pre-Cooler									
Conductivity (µS/cm) A		Temperature °C B		Calcium Hardness (PPM as CaCO ₃) C		Total Alkalinity (PPM as CaCO ₃) D		Alkalinity (PPM as CaCO ₃) pHeq	
50-300	0.1	10-13	2.3	10-15	0.70	10-15	1.10	50	7.0
301-1000	0.2	14-17	2.2	16-25	0.90	16-25	1.30	100	7.5
1001-3000	0.25	18-21	2.1	26-40	1.10	26-40	1.50	200	7.9
3001-5000	0.27	22-27	2.0	41-70	1.35	41-70	1.75	300	8.2
				71-100	1.55	71-100	1.90	400	8.4
				101-140	1.70	101-140	2.10	500	8.5
				141-200	1.85	141-200	2.25		
				201-250	1.95	201-250	2.35		
				251-300	2.05	251-300	2.45		
				301-350	2.12	301-350	2.52		
				351-400	2.18	351-400	2.58		
				401-450	2.24	401-450	2.63		
				451-500	2.28	451-500	2.68		

Calculation of Practical Scaling Index

Instructions:

1. Obtain values of A, B, C and D from above tables
2. $pH_s = (9.3 + A + B) - (C + D)$
3. Practical Scaling Index = $2 pH_s - pHeq$
 - If Index is 6.0, water is stable
 - If Index is above 6.0, water is scale dissolving
 - If index is below 6.0, water is scale forming

With Practical Scaling Index below 5.5, minimum recommended water flow in Table "Minimum Water flow rates" needs to be increased, contact your local BAC-Balticare representative for support.

Biological Control

The Adiabatic Pre-Cooler and its controls have been designed to minimize the risk of uncontrolled growth of algae, slimes and other micro-organisms such as Legionella:

1. direct water system, no water recirculation
2. no standing water
3. complete drying of the Pre-Cooling system after each adiabatic cycle
4. complete draining of all water distribution piping installed on the unit after each adiabatic cycle



Caution

THE OWNER OF THE EQUIPMENT IS RESPONSIBLE FOR DRAINING OF ALL WATER PIPING FEEDING THE ADIABATIC PRE-COOLER TO AVOID STAGNANT WATER CONDITIONS.

5. use of potable water supply at temperatures of 20 °C or less, where Legionella is dormant
6. aerosol free operation.

When basic housekeeping practices are followed, and when the guidelines for operation and maintenance of this bulletin are followed, problems related to uncontrolled growth of micro-organisms will be avoided.

Chemical Treatment

A biocide program for biological control can be implemented in conjunction with the maintenance program for increased operational safety. However, biological control should not be used in place of good housekeeping. The two most commonly available biocides are chlorine and bromide. These chemicals have widespread success in general application; however, caution should be practiced when using them in the Adiabatic Pre-Cooling system. Continuous dosages of chlorine or bromide could delignify the cellulose fibres of the Pre-Cooler media, and degrade the stiffening agents.

RECOMMENDED CHLORINE / BROMIDE DOSAGES

Continuous Treatment: Not required when basic housekeeping practices are followed, and when the guidelines for operation and maintenance of this bulletin are followed.

Shock Treatment: 3.0 – 5.0 PPM Free Halogens. Not recommended more often than once per quarter.

About Cold Weather Operation

BAC dry coolers can be operated in sub freezing ambient conditions provided the proper measures are taken against coil freezing. Listed below are general guidelines which should be followed to minimize the possibility of coil freeze-up. As these guidelines may not include all aspects of the anticipated operation scheme, system designer and operator must thoroughly review the system, location of the equipment, controls and accessories to ensure reliable operation at all times.

Protection Against Coil Freezing

The best protection is the use of glycol or other anti freeze solutions in appropriate concentrations. The use of such solutions influences the thermal performance of the dry cooler and this should be taken into account, when selecting the model(s). The table below indicates the freeze protection range for various ethylene glycol concentrations (% by volume).

% Ethylene	Freeze Protection
20%	-10°C
30%	-16°C
40%	-25°C
50%	-39°C

Freeze Protection of Ethylene Glycol Solutions

If the system must be operated with water, both of the following conditions must be met simultaneously:

1. Maintain a minimum flow through the unit at all times.
2. Ensure a turbulent flow through the unit at all times.
3. Maintain a minimum heat load, so that the temperature of the water leaving the coil(s) will not fall below 10°C based on -14°C ambient temperature and 20 m/s wind velocity.

If the process load is extremely light or shut off, it may be necessary to apply an auxiliary heat load during freezing conditions. Consult your local BAC Balticare representative for advice.



A full coil drain of the heat exchangers is not possible and as such, Fluid Coolers operating under ambient temperatures that could drop below freezing point, must contain liquid with an antifreeze agent.

TrilliumSeries Coolers with EC Fans & Factory Installed Control Panel

Each unit is equipped with a control panel and a power panel.

The fan speed is controlled and the adiabatic pre-cooling is activated by a digital controller integrated into the electrical panel.

CONTROL LOGIC

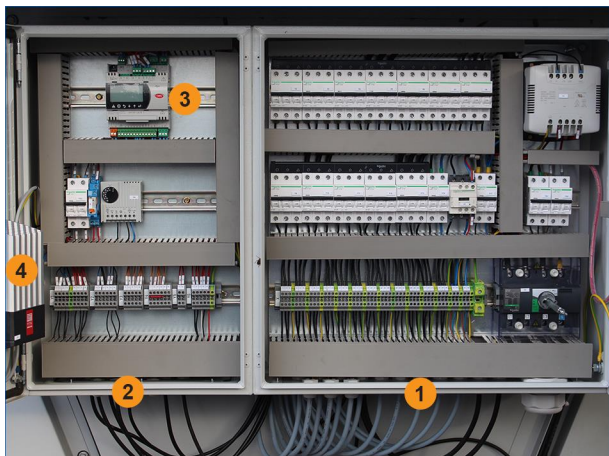
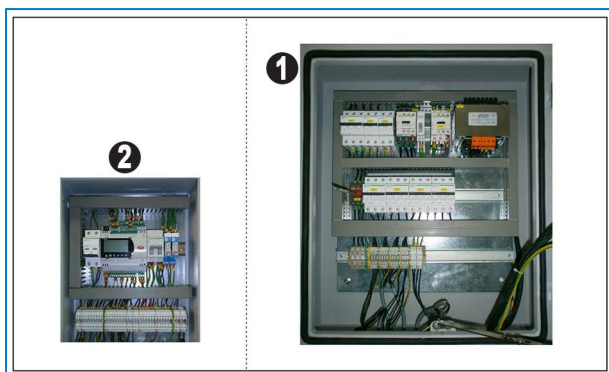
The fan speed is controlled on the basis of the actual process fluid temperature at the exit of the unit and the design leaving temperature, ensuring a minimum in electrical consumption and noise levels.

The adiabatic pre-cooling will be activated and stopped on the basis of a pre-programmed logical combination of the fan speed and the ambient temperature (release set-point). Default settings will not activate adiabatic pre-cooling unless all fans are running at maximum permissible speed and the dry-to-adiabatic release set-point is reached.

The adiabatic control logic is pre-programmed and is ready for operation.

Depending on the actual size of the installation, the controller pre-programmed parameters may need to be adjusted.

Electrical Panels



1. Power Panel
2. Control Panel
3. Digital Controller with LCD interface
4. Optional Heater (required for ambient temperatures between - 10°C and - 40°C)

Electrical panel for unit with EC fans

1. Power Panel
2. Control Panel

CONTROL PANEL

The control panel contains the digital controller and the optional thermostat.

At the outside of the control panel, the following components can be found:

- Emergency stop: Push to activate; rotate to de-activate.
- Reset button (restart after emergency stop).
- 24VAC power indicator light.

The control panel contains the digital controller.

At the inside of the control panel, the following component can be found:

- Pad Maintenance Switch (DVW)
 - AUTO(II): Pads will be (de)activated based on the units programming
 - HAND(I): Pads will be forced in wet mode resulting in adiabatic operation



Pad Maintenance Switch (DVW) for EC fans

POWER PANEL

At the outside of the power panel, the following components can be found:

- Emergency Stop:
 - Push to activate; rotate to de-activate
- Power Failure Reset:
 - After a loss of main power, the unit may not start automatically. This button needs to be pressed after a technician has verified that it is safe to restart the unit.
- ON/OFF switch

Operating Instructions Digital Controller

There are four different menu's:

- default menu (consultation)
- Main loop menu (readout unit status, temperatures, fan speed, etc...)
- Alarms (status of different alarms)
- Operator menu (operational settings)
- User menu (operational settings)
- factory menu (not accessible)
- Manufacturer menu (not accessible)
- Clock
- System info
- Logger (alarm and warning history)
- Maintenance
- Working time (operating hours fans and adiabatic pre-cooling)
- Inputs/outputs



Please refer to the Software Instructions Manual (SI-TVFC) and the units specific parameter settings in your submittal package.



1	⚠
2	🕒
3	↶
4	↓
5	↑
6	↵

1. Alarm
2. Programme
3. Escape
4. Down
5. Up
6. Enter

Symbols on digital controller

Default Menu

The overview of different operational parameters and their settings (ex: temperatures, set point, theoretical frequency, actual frequency, and some general statuses)

Alarms

This menu can be accessed by pressing on the Alarm button (*Triangle with exclamation mark*).

To acknowledge an alarm, press the Alarm button (*Triangle with exclamation mark*). If the source of the alarm has disappeared, so will the alarm message, otherwise the alarm will stay present.

Operator Menu

To access this menu press 🕒.

After you select the desired menu, press ↵.

You can return to the default menu by pressing ↶.

Before you can enter the actual menu, a password needs to be given. The standard password is "1234"

The following items are available:

- Local on/off
- Set point (both summer and winter)
- PI parameters
- Cleaning cycle activation/deactivation + duration
- Day/night operation activation/deactivation + start/stop
- Day/night operation maximum frequency
- Restriction on water usage period
- Status of pre-cooler authorization
- Time delay on alarm messages
- Reset function on internal timers (VFD, pre-coolers)
- Communication address + baud rate
- Time/date
- Change access code



Caution

**CHANGING THE CONTROLLER'S PARAMETERS MAY RESULT IN AN UNDESIRE
OPERATION OF THE UNIT SUCH AS A 'HUNTING' PHENOMENON, PREMATURE ACTIVATION
OF PRE-COOLING (HENCE INCREASED WATER CONSUMPTION) OR IN LATE PRE-COOLING
ACTIVATION RESULTING IN FLUID OUTLET TEMPERATURES EXCEEDING THE DESIGN
TEMPERATURE.**

Monitoring of Process Information

DRY CONTACTS

- Input:
 - On/off release (NO)
 - Run authorization (NO)
 - Free cooling (NO)
- Output:
 - General Alarm (NO+NC)
 - Warning (NO)
 - Run Indication (NO)

DIGITAL BUS SYSTEM

A bus connection from the digital controller for monitoring can be wired to the terminal strip. Depending on the required communication protocol, a different optional communications card can be installed in the controller.

Checks and Adjustments

ADIABATIC PRE-COOLER WATER FLOW

A minimum water flow must be distributed over the Adiabatic Pre-Cooler as per Minimum Water Flow Rates. (See table below "Minimum Recommended Adiabatic Pre-Cooler Water Flow Rates").

The water flow will depend on the supply water pressure, and can be set by adjusting the adjustment screw on the water flow valve on the flow meter (See Figure below). Read off the water flow at the underside of the float.



Model	Number of Fans	Minimum pre-cooler water flow per unit
DFCV-EC9122-*	4 fans	14 l/min
DFCV-EC9123-*	6 fans	22 l/min
DFCV-EC9124-*	8 fans	28 l/min
DFCV-EC9125-*	10 fans	36 l/min
DFCV-EC9126-*	12 fans	44 l/min
DFCV-EC9127-*	14 fans	50 l/min

Recommended Adiabatic Pre-Cooler Water Flow Rates

ADIABATIC PRE-COOLER SET-POINT

The operation of the Adiabatic Pre-Cooling sections is controlled by the digital controller



The controller should limit the start and stop to maximum 1 per day per Adiabatic Pre-Cooling side, this to increase the service life of the Pre-Cooler media. If the number of daily starts and stops exceeds 1 per day, it is recommended that the controller's set points are adjusted. The Pre-Cooler can be operated to allow a higher number of starts and stops which could reduce total annual water consumption, however, this practice will drastically reduce the service lifetime of the Adiabatic Pre-Cooler media.

ELECTRICAL CONNECTIONS

Check and tighten electrical contacts if required before commissioning the unit. Transport may loosen some of the contacts, posing a risk for overheating or voltage drops. Also during operation, half-yearly checks are recommended.

ROTATION OF FANS

Fans must rotate without obstruction in the direction indicated by arrows on the equipment.

MOTOR VOLTAGE AND CURRENT

Check the voltage and the current of all three legs of the fan motors. The current should not exceed the nameplate rating. After prolonged shutdown the motor insulation should be checked with a Megger insulation tester prior to restarting.

The voltage must not fluctuate more than +/-10% and the imbalance between phases must not be greater than +/-2%.



Caution

DO NOT RUN/START THE FAN MOTOR(S) WHEN THERE IS NO HEAT LOAD.

UNUSUAL NOISE AND VIBRATIONS

Unusual noise and/or vibration are the result of malfunctioning of mechanical components or operational problems (e.g. unwanted ice formation). If this occurs, a thorough inspection of the entire unit followed by immediate corrective action is needed. If required, consult your local BAC Balticare representative for assistance.

Inspections and Corrective Actions

GENERAL CONDITION OF THE EQUIPMENT

Once a year the general condition of the equipment should be inspected.

The inspection should focus on:

- signs of corrosion
- accumulation of dirt and debris

If there are any signs of blemishes or corrosion, the affected area should be thoroughly wire brushed and re-coated. The recommended procedure is to use a base coat of ZRC (Zinc Rich Compound). The ZRC is available from your local BAC-Balticare representative.

Smaller damages of the corrosion protection **MUST** be repaired as soon as possible to prevent the damage from getting bigger. For BALTIBOND® hybrid coating use kit (part number RK1057). Larger damages should be reported to the local BAC Balticare representative.

ADIABATIC PRE-COOLING MEDIA

About Adiabatic Pre-Cooling

Airborne debris is caught in the Adiabatic Pre-Cooling media. They act as an air filter and as such protect the heat exchanger coil from rapid and excessive fouling. During adiabatic operation the media is 'rinsed' by water overfeed. The debris, that is rinsed from the media, will drain together with the excess water.

The Pre-Cooling Media can be removed during cold seasons, as soon as it is guaranteed that the ambient temperature will no longer exceed the dry-to-adiabatic switch point. This will extend the service lifetime of the media. It will however increase the speed of fouling of the dry heat exchanger coil.

At least every quarter an inspection of the Adiabatic Pre-Cooler media is recommended, also during mid-season and winter season when usually no adiabatic cycles would be needed.

The inspection should focus on:

- signs of excessive fouling and scaling of the media
- full and even wetting of the face area

Fouling

If excessive dirt and debris has accumulated on the pre-cooling media, it is recommended to rinse the media.

Refer to "Adiabatic Pre-Cooling Media" on page 32 for the recommended procedure for cleaning and rinsing of the media.

Scaling

Scaling will deposit on the Pre-Cooling Media, every time that the Pre-Cooling Media dries at the end of each adiabatic cycle. The rate of scaling will depend upon:

- the number of adiabatic starts and stops per day
- the water quality
- the water flow over the adiabatic pre-cooler

The expected service lifetime of the pre-cooling media is 5 to 7 years if basic housekeeping practices and these operating and maintenance guidelines are followed.

If excessive scaling is accumulating too fast on the Pre-Cooling Media, the following checks and adjustments need to be made:

- Check and adjust number of adiabatic starts and stops:
refer to "Checks and Adjustments" on page 19, section "Adiabatic Controller Set-Point".
- Check and adjust water quality:
refer to section "About Water Care" on page 9
- Check and adjust water flow distributed over Adiabatic Pre-Cooler:
refer to section "About Water Care" on page 9.

HEAT EXCHANGER COIL

The finned heat exchanger coil is susceptible to corrosion and entrapment of airborne particulates (coil fouling).

The speed of coil fouling can be reduced, and the service lifetime of the finned coil can be extended, if the pre-cooling media is kept in place also during cold seasons, to act as air filter.

The heat exchanger coil requires periodic cleaning to maintain the highest operating efficiency possible under the environmental conditions in which the dry unit operates. Regularly scheduled coil cleaning makes a significant contribution to extending equipment lifetime and is an excellent source of energy conservation.

Periodic cleaning of the heat exchanger coil can be accomplished by a vacuum cleaner and/or pressurised air stream. In polluted environments cleaning will require commercially available coil cleaning agents. Cleaning coils by spraying them with water may remove large deposits but do little to remove pollutants. Removing dirt and salts requires a detergent to break the bond between the soil and the surface of the heat exchanger. However, if water spray is applied, the water pressure must never exceed 2 bar and the water jet must never be applied at an angle to the surface of the fin, but only in parallel to it.

Selecting a coil cleaner is important since the cleaner must neutralise and remove deposits on the surface of the coil. BAC does not recommend the use of alkaline and acidic coil cleaners. These coil cleaners can cause foaming action (oxides or hydroxides of aluminium) resulting in the stripping away of minute layers of the base alloy and the attached soil. Most of these foaming cleaners are harsh and known as reactive cleaning products. One way to recognise this type of cleaner is that normally it will be labelled as corrosive. The base ingredient of a coil cleaner should not be so harsh that it attacks the metal, coil coating or the personnel applying the cleaner. An important concern when applying coil cleaners is rinse-ability. Most hydroxides tend to cling the surface unless sufficient wetting agents have been added to the formula to reduce surface tension of the solution. If the solution does not have enough wetting agents and is not rinsed thoroughly from the surface, the residual material can settle at the fin/tube interface and continue to attack the fin. BAC recommends the use of the more sophisticated cleaners, known as a "surfactant system". They reduce surface tension, penetrate, emulsify, and dissolve the soils without the base alloy. Surfactant systems are safe for the coil alloy, they are free rinsing, they lift and remove deposits better than alkaline cleaners, and they are environmentally safe, as well as safe and easy to apply and rinse. Surfactant systems are almost always non-corrosive.

Fan Replacement

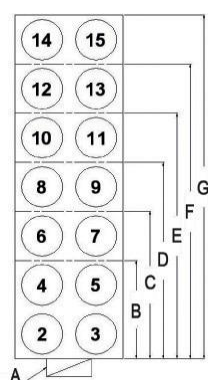
In case of replacement, any safety hazards stemming from the fan must be re-evaluated once it is installed on the cooler.

Observe the following when working on the fans:

- Do not make any modifications, additions or conversions to the fan without the approval of the cooler manufacturer.
- Terminals and connections may have residual voltage after unit shutdown.
Wait five minutes after disconnecting the voltage at all poles before opening the fan.
- In the event of failure, there is electric voltage at the rotor and impeller.
Do not touch the rotor and impeller once they are installed.
- Shut down the fan immediately if you detect a missing or ineffective protective feature.

The fans are controlled via a digital bus system (MODBUS RTU). For the bus communication each fan needs to be assigned a unique address, starting with "2, 3, 4.....", leaving 1 free for any replacement fan. The sequence of the above system is shown on the diagram below.

In case of a fan replacement it will be necessary to specify the assigned fan number shown on the diagrams, so that the replacement fan will be programmed accordingly.



- A. Control Panel
- B. 4 Fan Unit
- C. 6 Fan Unit
- D. 8 Fan Unit
- E. 10 Fan Unit
- F. 12 Fan Unit
- G. 14 Fan Unit

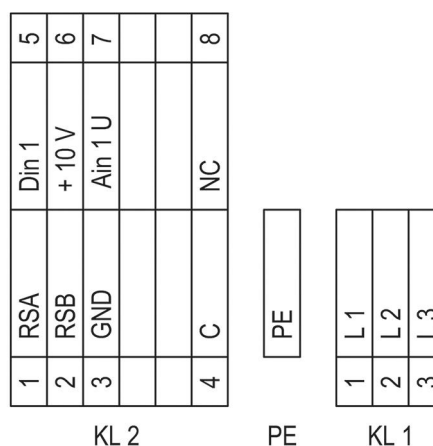


Diagram showing sequence of fan motor address

Schematic of Internal Motor Terminal Strip

No.	Conn.	Designation	Function / assignment
KL 1	1	L1	Mains supply connection, supply voltage 3~380÷480 VAC; 50/60 Hz
KL 1	2	L2	Mains supply connection, supply voltage 3~380÷480 VAC; 50/60 Hz
KL 1	3	L3	Mains supply connection, supply voltage 3~380÷480 VAC; 50/60 Hz
PE		PE	Earth connection, PE connection
KL 2	1	RSA	Bus connection RS-485, RSA, MODBUS RTU; SELV
KL 2	2	RSB	Bus connection RS-485, RSB, MODBUS RTU; SELV
KL 2	3	GND	Signal ground for control interface, SELV
KI 2	4	C	Status relay; floating status contact; changeover contact; common connection; contact rating 250 VAC / 2 A (AC1)
KL 2	5	Din1	Digital input 1 enabling of electronics Enabling: open pin or applied voltage 5-50 VDC Disabling: bridge to GND or applied voltage < 1 VDC Reset function: triggers software reset after a level change to <1 V; SELV
KL 2	6	+ 10 V	Fixed voltage output 10 VDC, +10V ±3%, max. 10 mA, short circuit-proof, power supply for external devices (e.g. potentiometer), SELV
KL 2	7	Ain U	Analogue input 1 (set value) 0-10 V, Ri=100 kΩ, parametrisable curve, only usable as alternative to input Ain1 SELV
KL 2	8	NC	Status relay, floating status contact, break for failure

Legend for Internal Motor Terminal Strip

Cleaning Procedures



Caution

SST PARTS CAN BE SHARP. AVOID RISK FOR CUTTING INJURY BY WEARING THE PROPER PROTECTIVE EQUIPMENT !

WATER DISTRIBUTION PIPE AND STRAINERS

WATER DISTRIBUTION OF ONCE-THROUGH PRE-COOLERS

The water distribution piping of the adiabatic Pre-Cooling section is supplied with in line water filters, filtering water particles from the incoming water.

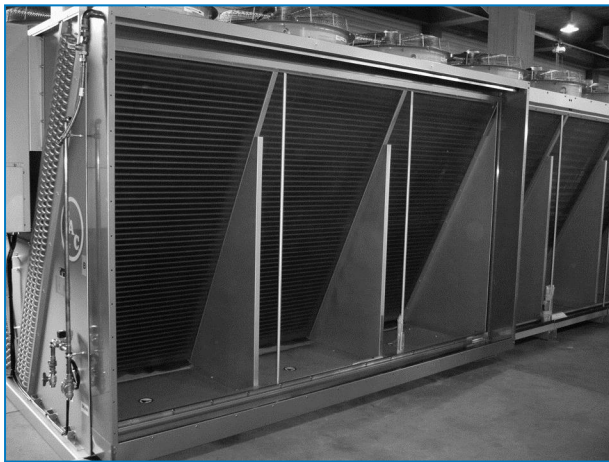
Some solids in the water may however accumulate in the water distribution header and need to be rinsed out at least twice a year. Also the city water filters or strainers need to be cleaned out at least once per month as follows: remove water filter access cap, remove strainer mesh and rinse mesh with clean water.



Water Filter

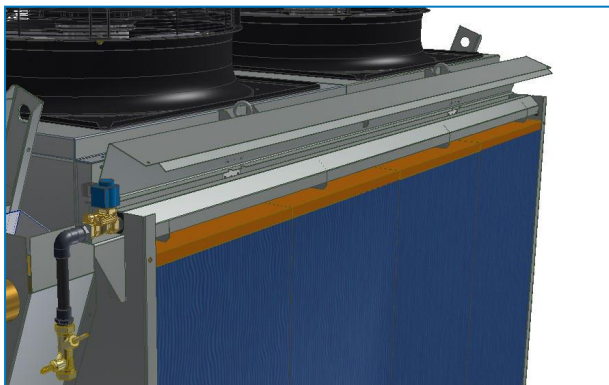
Solids in the water may accumulate in the water distribution system and need to be rinsed out at least twice a year. The recommended procedure for cleaning of the water distribution header is:

1. Remove all the pre-cooling media from the pre-cooler section to give access to the water distribution header ends. Refer to "Cleaning Procedures", section "Adiabatic Pre-Cooling Media", subsection "Removal and Replacement".

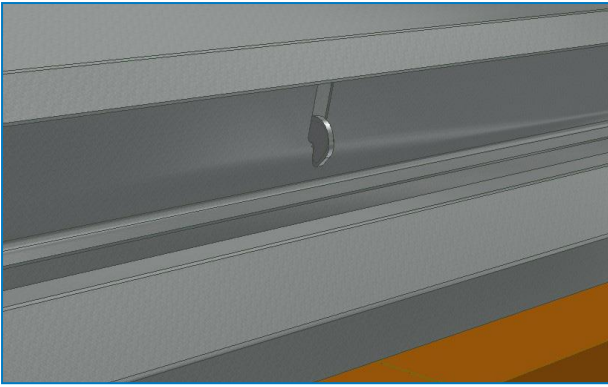


Unit without Pre-cooling Media

2. Open the hinged pre-cooling media cover (the 1st time, remove the tappers that secure the cover during transport first)



The cover can be secured in the open position by means of a hook that is positioned in the middle.

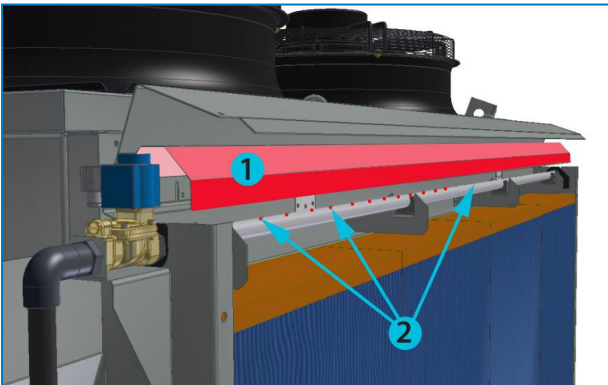


3. Unscrew the flexible sleeve connection by loosening the sleeve clamps. Use a 7 mm spanner or other appropriate tool.



Flexible Sleeve Connection

4. Lift the water deflection plates and remove them



1. Water Deflection plates
2. Water Holes
5. Gently pull out the water feed assembly



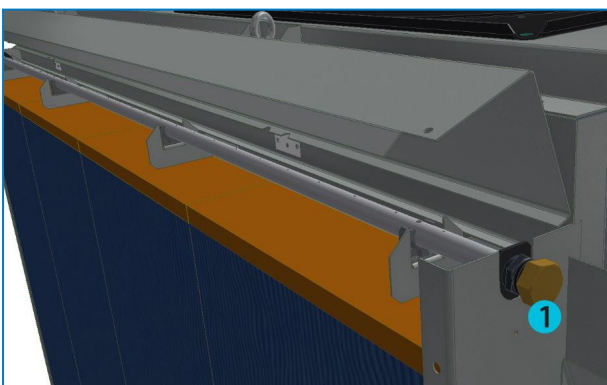
Waterfeed Connection

6. Activate the pre-cooler water from the digital controller's maintenance menu to verify if any holes are clogged and need cleaning. If water is spraying out of the tube (+/- 10 cm high) at regular intervals, all holes are free.
7. Pull the copper tube pipe downwards to release it from the plastic holders.



Release Copper Collector from Plastic Holders

8. Unscrew the cap at the end of the tube to flush any debris that might be caught in the water distribution pipe.



1. Cap on Water Distribution Tube
9. Carefully remove the collector from the pre-cooler

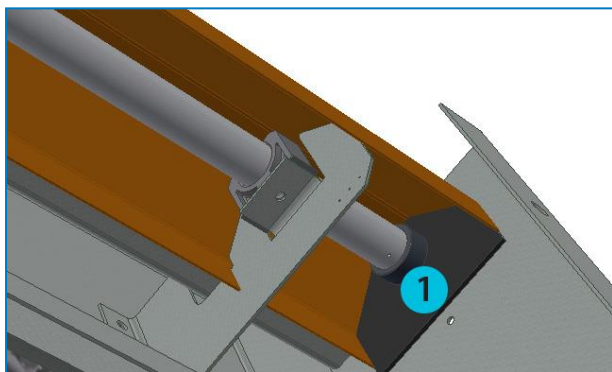


Remove Copper Waterfeed Pipe

10. After the tube is flushed, stop the flow of water by exiting the maintenance menu. Put everything back in place in the reverse order. Close the cover by gently lifting the securing hook.



When reinstalling the water deflection plates, make sure to slide the rubbers to the side in order to provide a proper seal as indicated in the following picture.



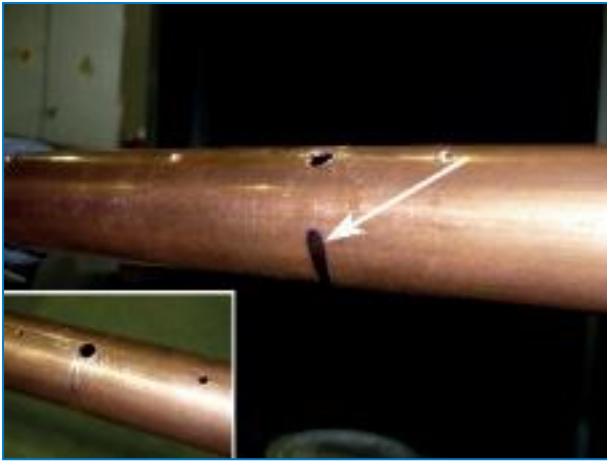
1. Side rubbers on the water distribution tube

11. Use a 3,5 mm drill to clean by hand the spraying holes from any dirt accumulation.



Clean Spraying Holes

12. On the collector there is an alignment hole. Mark its position on the opposite side of the collector to assist you in placing the collector back in the pre-cooler section.



Alignment Hole

13. One of the plastic holders has a longer screw to assist in the alignment of the collector. Make sure that you have the correct side of the collector facing the plastic holder.



Plastic Clip with Longer Screw

14. First put the collector through the hole of the side gable. Note that this is the opposite side of the alignment hole.



Installation of Copper Waterfeed Pipe

15. Use the mark you made on the collector to locate the correct position of the alignment hole. Push the collector upward to clamp it securely into the plastic holders.



Alignment of Waterfeed Pipe

16. Reposition the water feed assembly. Note that it should go +/- 30 mm inside the rubber tube.



Waterfeed Assembly

17. Tighten the sleeve clamps to secure the water feed assembly in place.



Flexible Sleeve Connection with Sleeve Clamps

18. Connect the flexible pipe to the city water supply. Use the "Pad maintenance" switch to open the city water valve. Check the collector for any holes that remain clogged. If some holes are still clogged, repeat the procedure.



Waterfeed Assembly connected to City Water Connection with Flexible Pipe

19. Place the Pre-Cooling Media back in the pre-cooler section. Refer to section "Adiabatic Pre-Cooling Media" on page 32.



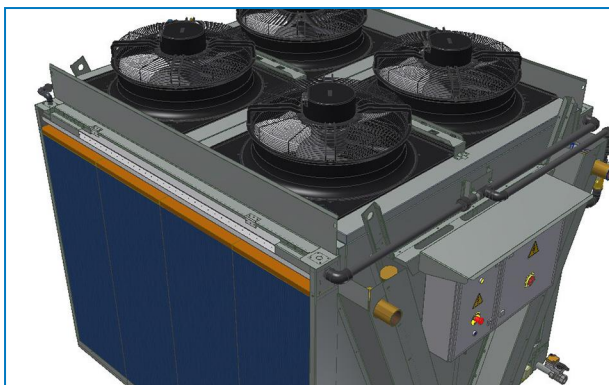
Unit with adiabatic Pre-Cooling Media installed

WATER DISTRIBUTION OF PRE-COOLERS EQUIPPED WITH RECIRCULATION PUMP

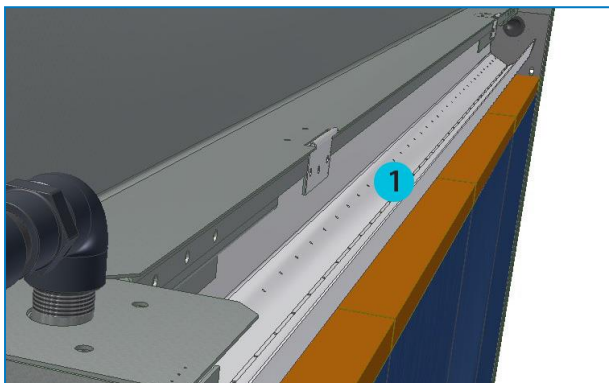
The strainer at the pump is sized to keep debris out of the water distribution gutter. However, some dirt could accumulate overtime. As a result the water distribution gutter at the top should be cleaned twice a year as a preventive measure.

The recommended procedure for cleaning of the water distribution header is:

1. Open the hinged pre-cooling media cover (the 1st time, remove the tappers which secure the cover during transport first)



2. Use a clean piece of cloth to remove any dirt or debris from the gutter.



1. Distribution Gutter

3. After the gutter is cleaned, put everything back in place in the reverse order and close the cover.

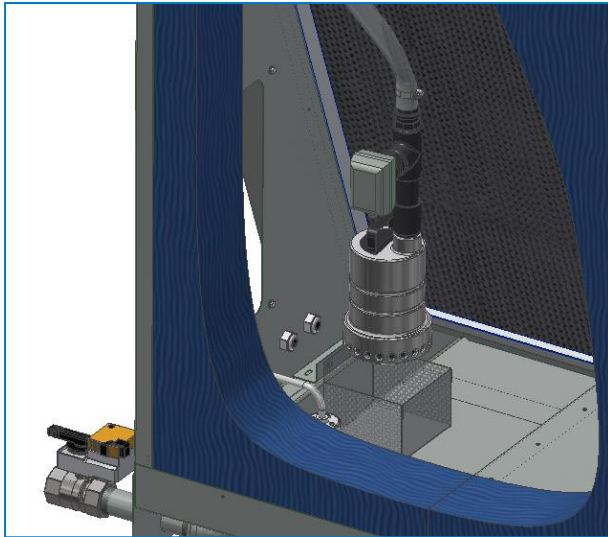
STRAINER AND PUMP OF PRE-COOLERS EQUIPPED WITH RECIRCULATION PUMP

Both the pump and strainer can be cleaned during adiabatic operation. Before performing any maintenance on the pumps, cut the power to the pumps in the electrical panel first. Adiabatic operation can be ensured through the controller's maintenance menu.

1. Loosen the knobs and remove the inspection panel (in case of two pumps, the unit is equipped with two panels).



2. Lift the pump out of the strainer and remove it through the inspection panel.



3. Remove the bolts securing the strainer in the sump to remove this as well in order to clean it outside of the unit.
4. Reinstall in the reverse order.

Adiabatic Pre-Cooling Media

CLEANING

The digital controller provides automatic periodic cleaning of the pre-cooling media.

If the media need additional manual cleaning, a cleaning cycle can be forced through the controller.

In extraordinary circumstances, if manual rinsing is required, the recommended procedure for cleaning of the pre-cooling media is to turn the "Pad maintenance Switch", provided on the door of the electrical panel, to the "Hand" position for a period of 1 to 2 hours. Never use a brush or high-pressure hose for cleaning of the adiabatic pre-cooling media.

REMOVAL AND REPLACEMENT

The expected service lifetime of the pre-cooling media is 5 to 7 years if basic housekeeping practices and these operating and maintenance guidelines are followed. If severe disposition causes reduced humidification efficiency and reduced airflow, it is recommended that the pre-cooling media is replaced. New adiabatic pre-cooling media are available from your local BAC-Balticare representative.

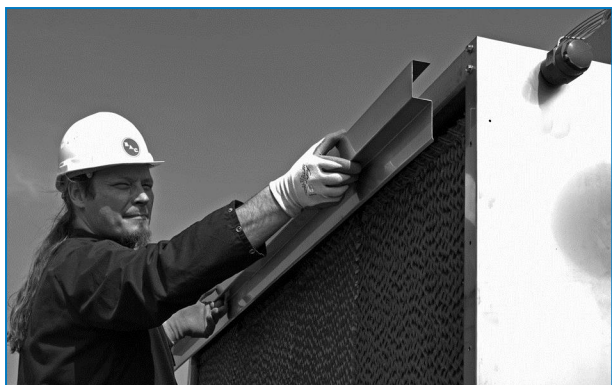
Media removal/replacement procedure:

1. Verify that the pre-cooling media are DRY! Removing a wet pad will create debris falling into the unit.
2. Remove top plate.
3. Remove water distribution pad.
4. Remove pre-cooling media.

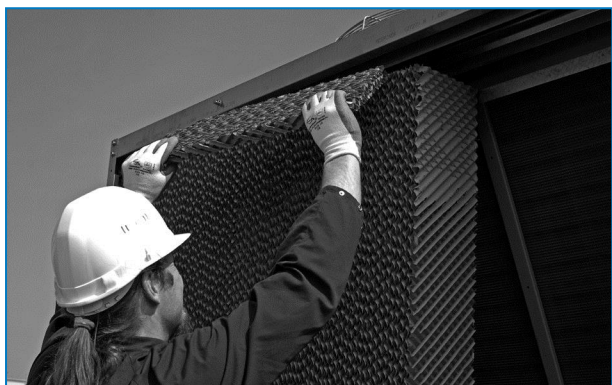
Start in the middle first and work your way to the sides.

For re-installation of the media follow steps 4 to 1 in reverse sequence.

Re-install in reverse. Make sure the pre-cooling media is properly pressed down on the supports in the water collection gutter beneath.



Remove Top Plate



Removal Water Distribution Pads



Removal pre-cooling media



Caution

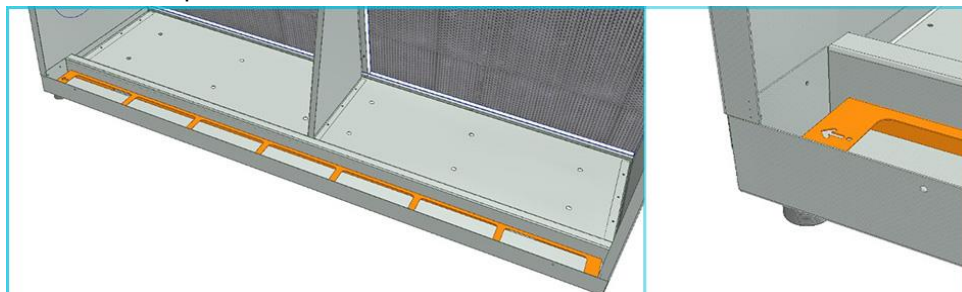
THE PRE-COOLING MEDIA HAVE A FRONT SIDE AND A BACK SIDE AND NEED TO BE (RE)INSTALLED IN THE CORRECT POSITION TO ENSURE FULL WETTING OVER THE DEPTH OF THE MEDIA AND TO ENSURE MAXIMUM EFFICIENCY. THE BLUE COLOURED SIDE NEEDS TO BE AT THE OUTSIDE.

WATER COLLECTION GUTTERS BENEATH THE PRE-COOLING MEDIA

The water that is passed over the pre-cooling media and did not evaporate is collected through a gutter that guides this water either to a drain (in case of a once through pre-cooler) or to a sump (in case of a pre-cooler with recirculation).

Once a year it needs to be verified that the gutter is free of debris and that the water outlet connections are free of obstructions. This can be done by removing the pre-cooling media as described here above.

When reinstalling the pre-cooling media support, make sure the arrow points toward the water outlet connection as indicated in the pictures below:



GUTTER SYSTEM

Connect bottom water drains of all Pre-Cooler sections at both sides of the unit to evacuate excess water.

The surplus of water distributed over the Adiabatic Pre-Cooling media during adiabatic operation is collected into a gutter and drained to the sewer via one or two different drains per pre-cooler side.

8-fan, 10-fan and 12-fan coolers are equipped with 4 separately shipped Adiabatic Pre-Cooling sections, 2 per side. Each Adiabatic pre-cooler section is equipped with a separate bottom drain guaranteeing full emptying and drying of the gutter system after each adiabatic cycle.

Refer to the Table below for the number of Adiabatic Pre-Cooler Sections and number of drains per model.

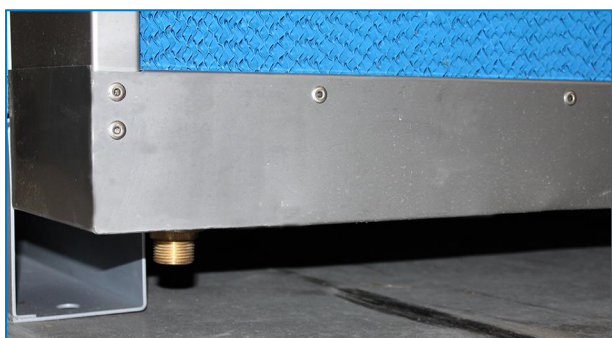
Model	Number of Fans	Number of Adiabatic Pre-Cooling Sections/Cooler	Number of Bottom Drains/Cooler
DFCV-EC9122-*	4	2	2
DFCV-EC9123-*	6	2	2
DFCV-EC9124-*	8	4	4
DFCV-EC9125-*	10	4	4
DFCV-EC9126-*	12	4	4
DFCV-EC9127-*	14	4	4

Number of Adiabatic Pre-Cooler Sections and Drains

Each pre-cooler section has a sloping pan, assuring complete water drainage and discharge of any floating solids to the sewer. Larger debris will however accumulate and settle in the gutter system and may be too large to drain via the bottom drain and finally may block the bottom drain.



Draining System – inside



Draining System - outside

It is therefore necessary to regularly clean the Adiabatic Gutter system to remove all solids. Access for cleaning is given to the inside of the gutter system after removal of the Pre-Cooling Media. For cleaning sequence see Table "Recommended Maintenance and Monitoring Programme" on page 1.

About Comprehensive Maintenance

In order to ensure maximum efficiency and minimum downtime of your evaporative cooling system, it is recommended to establish and execute a programme of preventive maintenance. Your local BAC Balticare representative will assist you in establishing and implementing such programme. The preventive maintenance programme must not only avoid that excessive downtime occurs under unforeseen and unwanted conditions, it also ensures that factory authorized replacement parts are used, which are designed to fit and for their purpose carry the full factory warranty. To order factory authorized parts, contact your local BAC Balticare representative. Make sure you include the unit serial number when ordering any parts.

Prolonged Outdoor Stay

Should the unit(s) be stored outside prior to installation and/or start-up for approximately one month or longer, or stored in severe climates, it is imperative that certain actions be performed by the installing contractor in order to maintain the unit in "as shipped" condition. These actions include but are not limited to:

- Rotate the fan(s) once per month, at least 10 revolutions.
- Rotate the motor shaft of all motors installed on the unit(s) once per month, at least 10 revolutions. This includes the pump motor.
- Add desiccants to control panel interiors.
- Wrap motor in non-plastic protective material.
- Keep drains open on the cold water basins.
- Ensure unit(s) is stored on level ground surface.
- Coils must be empty and closed-off.
- Avoid cold temperatures.
- Avoid condensation.
- Check battery of Controller.

For complete instructions, please contact your local BAC-Balticare Representative.

Balticare

BAC has established a specialized independent total care company called Balticare. The BAC Balticare offering involves all elements required to ensure a safe and efficient operation of your evaporative cooling products. From a full range of risk assessment to selective water treatment, training, testing, record keeping and annual system overview.

For more details, contact your local BAC representative for further information and specific assistance www.BaltimoreAircoil.co.za.

More Information

REFERENCE LITERATURE

- Eurovent 9-5 (6) Recommended Code of Practice to keep your Cooling System efficient and safe. Eurovent/Cecomaf, 2002, 30p.
- Guide des Bonnes Pratiques, Legionella et Tours Aéroréfrigérantes. Ministères de l'Emploi et de la Solidarité, Ministère de l'Economie des Finances et de l'Industrie, Ministère de l'Environnement, Juin 2001, 54p.
- Voorkom Legionellose. Ministerie van de Vlaamse Gemeenschap. December 2002, 77p.
- Legionnaires' Disease. The Control of Legionella Bacteria in Water Systems. Health & Safety Commission. 2000, 62p.
- Hygienische Anforderungen an raumluftechnische Anlagen. VDI 6022.

INTERESTING WEB SITES

- www.BaltimoreAircoil.co.za
- www.BaltimoreAircoil.eu
- www.Balticare.com
- www.eurovent-certification.com
- www.ewgli.org
- www.ashrae.org
- www.uniclimate.org
- www.aicvf.org
- www.hse.gov.uk





Handwriting practice lines consisting of 18 horizontal dotted lines.



A series of horizontal dotted lines spanning the width of the page, providing a template for writing or drawing.





Handwriting practice lines consisting of 18 horizontal dotted lines.



A series of horizontal dotted lines for writing, spanning the width of the page.





Handwriting practice lines consisting of 18 horizontal dotted lines.

COOLING TOWERS

CLOSED CIRCUIT COOLING TOWERS

ICE THERMAL STORAGE

EVAPORATIVE CONDENSERS

HYBRID PRODUCTS

PARTS & SERVICES



www.BaltimoreAircoil.co.za

info@BaltimoreAircoil.co.za

Please refer to our website for local contact details.

PO Box 32088 - 7808 Ottery, Cape Province, South Africa

© Baltimore Aircoil International nv